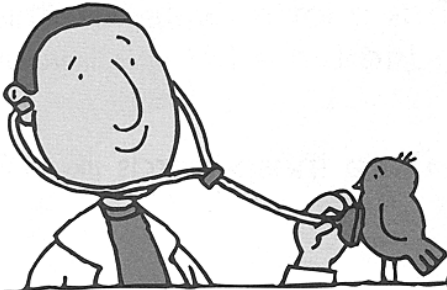


Puzzle

This puzzle is from *The Complete Book of Brainteasers* by American Education Publishing.

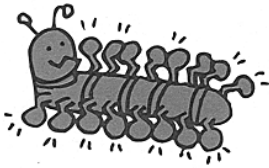
(Answer on page 24.)

Vet to the Rescue



Dr. Helppets is very busy. All day long, animals come to see him about many different illnesses.

► Match each animal to its illness by writing a letter on the line.



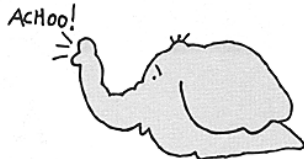
1. _____



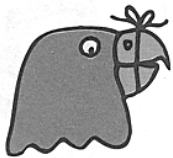
6. _____



2. _____



7. _____



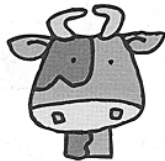
3. _____



8. _____



4. _____



9. _____



5. _____



10. _____

a. many cavities

b. lost stripes

c. chicken pox

d. stiff neck

e. only eight lives

f. gives chocolate milk

g. cold in nose

h. no voice

i. allergy to cheese

j. sore feet